

A photograph of a forest path. The path is a narrow, light-colored dirt or gravel trail that winds through a dense forest. On either side of the path, there are large, mature trees with thick, textured bark. The ground is covered with lush green plants, including large-leafed shrubs and grasses. Sunlight filters through the canopy, creating dappled light on the path and the surrounding vegetation. The overall atmosphere is peaceful and natural.

**INTERVALE
CENTER**

2022 IMPACT REPORT

THE INTERVALE

Sharing the Joy of the Land

The Intervale is a thriving ecosystem of farms, community gardens, programs, and recreational spaces. This is where our work began in 1988 and now, 34 years later, is a living laboratory for environmental justice and a haven for our community. Located in Burlington's Old North End, this one-of-a-kind community resource remains a place for us to practice our values of stewardship and conservation, grow food for our community, and provide places for rest and connection. We are so grateful to share this special place with farmers, stewards, and visitors like you!



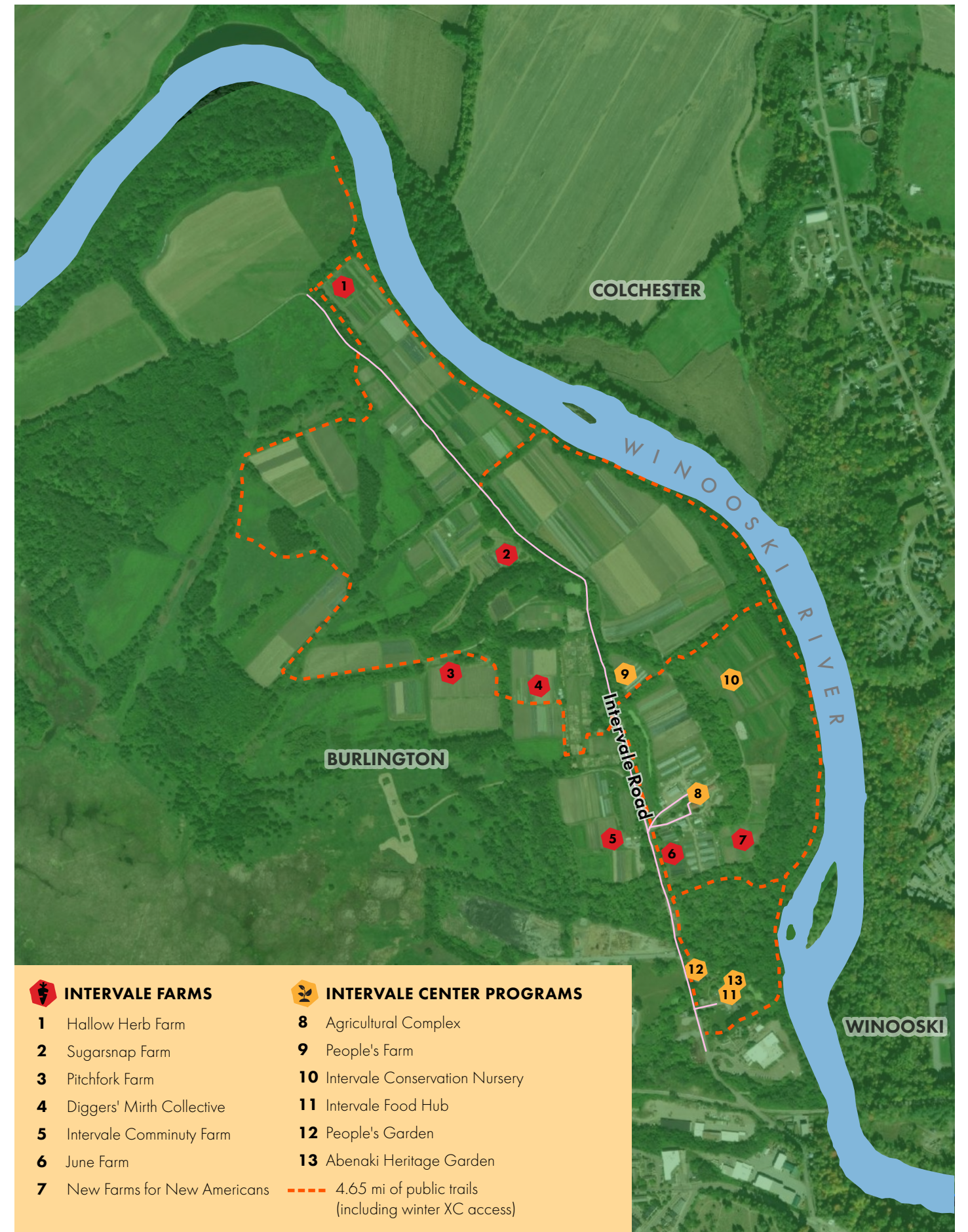
We love hosting live music, local food vendors, community organizations, and YOU at Summervale.

INTERVALE COMMUNITY

- Hosted **volunteers for 1,800 hours** across our Conservation Nursery, Gleaning & Food Access, Land Stewardship, and events – THANK YOU VOLUNTEERS for helping us build a strong community food system!
- Supplemented our free CSA program with **12,600 pounds of produce** grown at our own volunteer-powered People's Farm.
- Completed **three bird and pollinator habitat planting** projects to enhance biodiversity in the Intervale.
- Hosted our annual outdoor concert series **Summervale** in July and August.
- **Restored native ostrich ferns** in sensitive areas through planting and educating around over-harvesting.
- Held **27 educational workshops** ranging from outdoor cooking classes to a gardening series.
- Provided **land to seven organic farms**, including AALV's New Farms for New Americans program.
- **With AALV, planted garlic**—a culturally significant crop—that folks at New Farms for New Americans historically have not been able to grow.

“The People's Farm has been both a place of community for me as well as a way to give back. In addition to providing food security to my neighbors, the People's Farm gave me a place to get my hands in the dirt and meet new people who like to do the same thing. I have learned so much about plants through volunteering which gives me more motivation to keep growing food for myself and others.”

LILLY ST. ANGELO
People's Farm volunteer



NORTHWESTERN VERMONT

Feeding Our Neighbors

Located in the heart of Vermont's largest population center, we're committed to making fresh, local food widely accessible through production, gleaning, and innovative distribution. Our food access programming is a lifeline for our neighbors with 40% of Vermonters reporting that they faced food insecurity in 2022.



Gleaning is the process of rescuing excess produce that farms would otherwise not be able to sell.

INTERVALE FOOD HUB

- Offered produce, proteins, and provisions from more than **100 Vermont producers**.
- **Expanded delivery** in Burlington, Winooski, and South Burlington.
- **Shifted Food Hub operations to wholesale and storage services after 15 years of retail and supply innovation** – thank you Intervale Food Hub customers and producers!

FOOD ACCESS

- Served **225 income-eligible households** each week during the growing season through Fair Share, our free weekly CSA.
- Provided more than **1,900 individuals** with free fresh fruits and vegetables through Fair Share distributions, pop-ups, and community partnerships.
- Gleaned and distributed **62,000 pounds of fresh food** from farms at the Intervale, including our own People's Farm, and farms across Chittenden County.
- Distributed an additional **18,000 pounds** from the Intervale Food Hub and the Vermont Foodbank.

“Fair Share is a safety net and guaranteed source of high-quality food. It also makes me feel part of a community and cared for by those around me as well as making me feel more connected to local farms and grateful for what they're able to produce.”

FAIR SHARE
CSA recipient



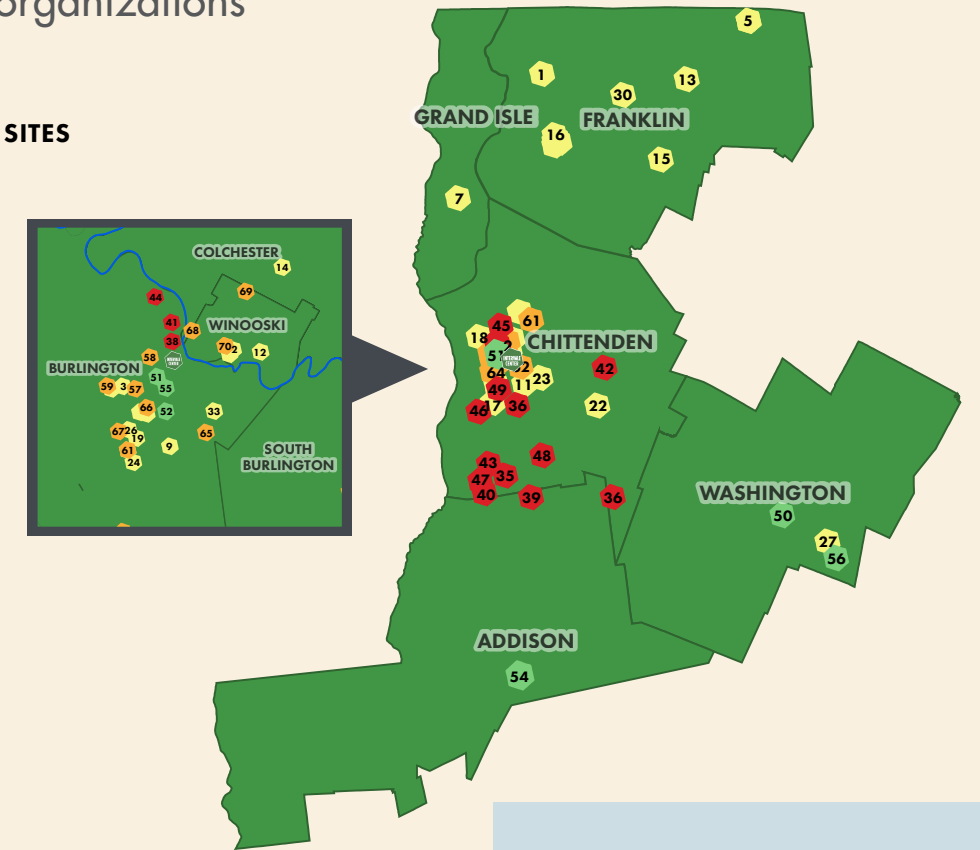
Food Access Partnerships: It takes a collaborative network to build an accessible food system. Our food access programs gleaned and distributed food with 70 organizations and farms in 2022!

EVERYONE EATS DISTRIBUTION SITES

- Abenaki Center
- Allen House
- ANEW Place
- Beacon Apartments
- Bermma Food Shelf
- Centerpoint Winooski
- Champlain Islands Food Shelf
- Champlain Valley Office of Economic Opportunity
- Chauncey's Cupboard at Champlain College
- Colchester Food Shelf
- Commando LLC
- Community College of Vermont - Winooski
- Enosburg Food Shelf
- Fab-Tech, Inc.
- Fairfield Community Kitchen
- Four Winds
- Harbor Place
- Heineberg Community Senior Center
- King Street Center
- Martha's Community Kitchen
- Northwest Family Foods
- Our Lady of the Holy Rosary Church
- Resource - Williston
- ReSOURCE Burlington
- Richford Soup Kitchen
- Salvation Army of Burlington
- Salvation Army of Barre
- Samaritan House
- Sara Holbrook Community Center
- Sheldon Food Shelf
- Spectrum Youth Drop-In Center
- Community College of Vermont - St. Albans
- UVM Medical Center
- Vermont Department of Health

GLEANING PARTNER FARMS

- Adam's Berry Farm
- Bread and Butter Farm
- Burnt Rock Farm
- Diggers' Mirth Collective Farm
- Full Belly Farm
- Head Over Fields
- Intervale Community Farm
- Jericho Settlers' Farm
- Philo Ridge Farm
- Pitchfork Farm
- Sam Mazza's Farm Market
- Shelburne Farms Market Garden
- Sweet Roots Farm
- Trillium Hill
- UVM Horticulture Farm



FOOD DISTRIBUTION PARTNERS

- Community Harvest of Central Vermont
- Feeding Chittenden
- Food Not Bombs
- Healthy Roots Collaborative
- H.O.P.E.VT
- People's Farm Stand
- Vermont Foodbank

FAIR SHARE PARTNERS

- AALV
- Boys and Girls Club
- COTS (Committee on Temporary Shelter)
- Early Years Child Center
- Mercy Connections
- NFI-VT (Northeastern Family Institute of Vermont)
- O'Brien Community Center
- Pine Forest Childrens Center
- Rally Cat's Cupboard at UVM
- Spectrum Youth and Family Services
- Steps to End Domestic Violence
- The DREAM Program
- Twincraft Skincare
- Winooski Public Library

VERMONT EVERYONE EATS

- Distributed **218,000** free meals across Chittenden, Franklin, and Grand Isle counties with our partners at Healthy Roots Collaborative for a total of **half a million meals distributed** since the program began in 2020.
- **20 restaurant partners** prepared meals with an average of **38% ingredients locally sourced** from Vermont producers, high above the program requirement of 10%.
- A total of **\$2,183,900** went to local restaurant partners through the Northwest hub.

VERMONT

Strengthening Vermont's Food System

Vermont's farm economy is in dynamic transition. We help farmers and producers shift business models, access land, tap into loans and grants, and respond to climate change and water quality issues. Building a strong community food system benefits us all, and the impact can extend far beyond what we eat to enhance quality of life, tourism, recreation, and a strong local economy.



Hilary and sheep at Rolling Bale Farm.



FARM BUSINESS SERVICES

- Provided free business planning services to **150 farmers**, including 59 beginning farmers.
- Administered Vermont Land Link with **229 farm seekers** and 35 new land access opportunities this year.
- Engaged in **Farm-to-Plate Land Access Working Group, Meat Task Force, and Accessory On-Farm Business discussion group**. Co-presented a service provider financial professional development training. Served on the Specialty Crop Block Grant and Working Lands Grant review panels.

“At the beginning of our farming career we learned about the Intervale Center, and have turned to their resources again and again. Business planning, guidance with land and infrastructure choices, access to an array of professionals are some of the resources we utilized. In a more recent addition of a farmstead creamery, the Intervale Center helped us all over again and even provided marketing guidance and funding for professional photos. They have been a pivotal resource for our farm and we love meeting other young farmers who feel the same way.”



HILARY HAIGH
Rolling Bale Farm &
Animal Farm Creamery

“The Friends of the Winooski River plants an average of 3000 trees per year in projects that protect streams and rivers, prevent flooding, and improve water quality. The success of our projects is completely dependent on the Intervale Conservation Nursery and their tree planting crew. We couldn't do this work without them!”



SHAWN WHITE
Project Manager at
Friends of the Winooski River

INTERVALE CONSERVATION NURSERY

- Planted a total of **36,000 native trees and shrubs** in restoration projects across the state along with our partners and customers.
- Propagated **60,000 stems** for future planting projects – more than ever before!
- Constructed a **new greenhouse** to increase growing capacity.
- **Hired a Seed Coordinator** for conservation and seed monitoring statewide in partnership with Vermont Fish & Wildlife Service and the Northwoods Center.



Intervale Conservation Nursery Crew ready to plant tamarack alongside partners at US Fish & Wildlife.



With our partners at Food Connects, Green Mountain Farm Connect, and Center for an Agricultural Economy, we developed **Vermont Way Foods**, a local food brand that distributes locally grown and produced goods.



VERMONT

Supporting Farms & Forests

Our **Farm Business Planning team** worked with Creek Valley Farm in Irasburg to provide marketing expertise and connect their farmstead creamery to customers, distributors, and funding opportunities. Photo by Corey Hendrickson.



Our **Conservation Nursery** played an important role in creating a wildfire corridor along the Wild Branch River in Wolcott. By planting native trees and shrubs throughout the underpass, we established safe habitats for animals to travel through this area.



Our **Conservation Nursery** services crew planted trees to maintain a Conservation Reserve Enhancement Program (CREP) site in Whiting. Stems planted included shrub willow, silky dogwood, and white pine. Our crew returned to the site a few months after planting to clear invasive species growing around the new trees.



150

Farm Business Planning Clients



30

Conservation Nursery Planting Sites



Jane, Dan, and André Maclean at Sweet Roots Farm in Charlotte. Photo by Daniel Schnechner.

2022 FARM BUSINESS CLIENTS (developing farms without names not included)

- | | | | |
|-----------------------------------|---------------------------|----------------------------------|-------------------------------|
| Aires-Hill Farm and Creamery | Cobble Creek Nursery | Liberty Hill | Soaring Meadow Farm |
| Animal Farm | Creek Valley Farm | Little Sister Farm | Sparrowhawk Farm |
| Arboreal Habits | Donegan Family Dairy | Loony Moon Farm | Square Deal Farm |
| Ascutney Harvest | Don-Sim Farm | Maple City Candy | Stella 14 Wines |
| Baird Farm | Dorset Peak Jerseys | Maple Wind Farm | SUSU Community Farm |
| Barnet Mountain Meats | Epona Farms | Maplemont Farm | Sweet Pickins Farm |
| Belle Fluer Farm | First Lady Sheep Farm | Milkweed Farm | Sweet Roots Farm |
| Black Watch Farm | Flack Family Farm | Morgan Hill Farm | Sweet Rowen Farmstead |
| Blackbird Organics | Flower Gap Farm | Mountain Sprouts | The Farm Upstream |
| Blank Page Cafe | Flying Buffalo LLC | Mt Mansfield Creamery | This Is Family Tree |
| Blue Heron Farm | Flying Dog Farm | New Growth Farm | Towhee Tea Company |
| Blue House Mushroom | Fools Farm | New Tradition Farm | Union Brook Farm |
| Boheme Botanika | Glasten Orchard | Nomad Farm | Unity Farm |
| Boneyard Farm | Glenn Hill Farm | North Hollow Berry Farm | Vermont Willow Nursery |
| Boro Hill Nursery | GMG Farms | Northland Farm | Von Trapp Farm |
| Boyd Family Farm | The Goat Project | Old Growth Organics | Vermont Mountain Meadows Farm |
| Branon Family Maple Orchards | Good Hands Farm | Old Soul Farm | West Lane Flowers |
| Bread and Butter Farm | Hawthorn Meadow Farmstead | Operah House Farm | Wild Woods Maple |
| Bridport Creamery | Head Over Fields | Perrin Farm | Winding Brook Farm |
| Broadbrook Mountain Trees | Heartsong Community Farm | Pigasus Meats | Witness Tree |
| Calabash Gardens | Hobby Hill | Poulin and Daughters Family Farm | Woodlawn Farm |
| Capital City Farmer's Market | Holyoke Dairy | Rock Meadow Farm | Wood's Market Garden |
| Champlain Valley Chestnut Farm | Immuno-Berry Farm | Sandy Bottom Farm | Yankee Rock Farm |
| Champlain Valley Goats & Rabbitry | Iroquois Acres | Scott Farm | Yoder Farm |
| Champlain Valley Hops | Khelcom Farm | Shakey Ground | Z Botanicals |
| Chertok Wines | Knoll Farm | Shangri-La Farm | Zafa Wines |
| Cloudwater Farm | La Montanuela | Shrubbly | |
| | Larson Farm | Snug Valley Farm | |
| | Levy Lamb | | |

STAFF

Sara Armstrong Donegan
Farm Business Specialist

Christine Badalamenti Smith
Administrative Coordinator

Dana Barrow
Development Director

Hannah Baxter
Gleaning & Food Access Manager

Christine Cramer
ICN Services Coordinator

Lexie Daly
Finance Director

Georgi de Rham
Food Hub Operations Assistant

Kelly Duggan
Marketing & Communications Manager

Patrick Dunseith
Land Manager

Taylor Firestein
Food Hub Purchasing Lead

Mandy Fischer
Program Director

Ben Fishbein
ICN Production Technician

Brooke Fleischman
ICN Seed Coordinator

Sarah Foster
ICN Crew Leader

Kiana French
ICN Propagation Coordinator

Emma Gonzalez
Everyone Eats Community Outreach and Distribution Manager

Lena Greenberg
Gleaning Coordinator

Melanie Guild
Development Manager

Brian Hotaling
Staff Accountant

Nathan Lake
Farm and Field Coordinator

Nikki Lennart
Farm Business Specialist

Sammy LeVine
Events Manager

Travis Marcotte
Executive Director

Kristen McDowell
Food Hub Operations Lead

Christopher McManus
Lands Technician

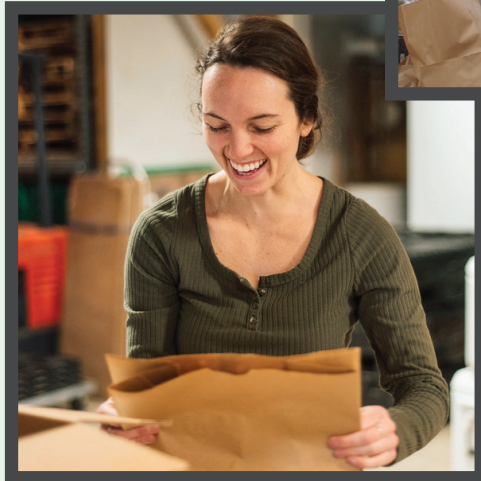
Anna Meli
Food Hub Operations Assistant

Duncan Murdoch
Natural Areas Stewardship Coordinator

Reid
Food Hub General Manager

Gina Simmons
Farm Business Specialist

Sam Smith
Farm Business Director



BOARD OF DIRECTORS

Jonathan Abodeely
Amy Bacon
Sue Bette
Katelyn Ellerman
Allison Gibson
Margaret Leddy
Noelle MacKay, Chair

Leslie McCrorey Wells, Vice Chair
Katharine Montstream
Eli Moulton
FM Muñoz, Treasurer
Sarah Muyskens
Joe Perrotto, Secretary
Lori Rowe

Dear Friends,

The pandemic emergency may be ending, but the needs of our community have grown.

Globally, climate change is increasing production variability in farming, disrupting food supply, and increasing costs. Food insecurity persists and many Vermonters face losing state food access benefits that have proved critical to their wellbeing. Land and housing are more expensive than ever, making it difficult for young and beginning farmers to find land.

The programming we have developed over the last 34 years demonstrates the impact we can have when we invest in equitable, local food systems. The community food systems we are building reduce vulnerability in our supply chains. They prioritize soil and ecosystem health and biodiversity, enhance the livelihood of farmers, and bring food and jobs to our community. They are the bridge we need to a more equitable, climate resilient, community-centric future—a future in which we care for farms, land, and people.

As I reflect on this past year, I am proud of the Intervale Center's ongoing response to the overlapping crises of our time. The accomplishments laid out in this report were made possible because of the dedication of our staff, the generosity of our donors, and the support of our partners and volunteers. We ask that you help bring more people and energy into this important work. Together we can lead the way to a more sustainable food system for all.

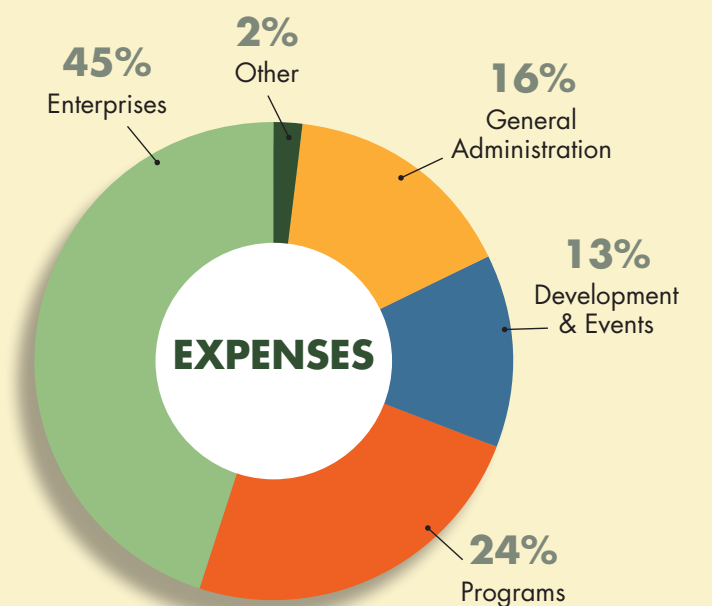
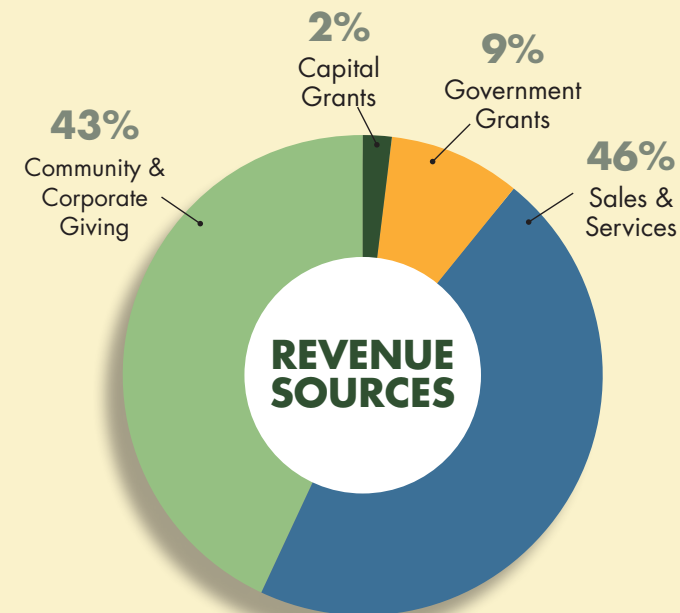
Warmly,

Travis P. Marcotte, Executive Director



INTERVALE CENTER 2022 FINANCIAL REPORT

(UNAUDITED)





IN MEMORY OF
Will Raap

Would the Intervale Center be here today without Will Raap? In 1988, when much of this land had been abused and abandoned, Will had a vision for reviving it. He founded the Intervale Center to restore soil health for farming and build a stronger food system. With work and dedication, his vision came to life as the Intervale grew into a robust community of farmers and stewards. He always pushed us and encouraged us to think big and expand our work, and he cared deeply about the planet. Will's impact in the Intervale and beyond will be remembered, and his presence in our community will be missed. Thank you Will, and the Raap family.



180 Intervale Road
Burlington, VT 05401
(802) 660-0440
www.intervale.org



To all of our donors
THANK YOU!

www.intervale.org/donors